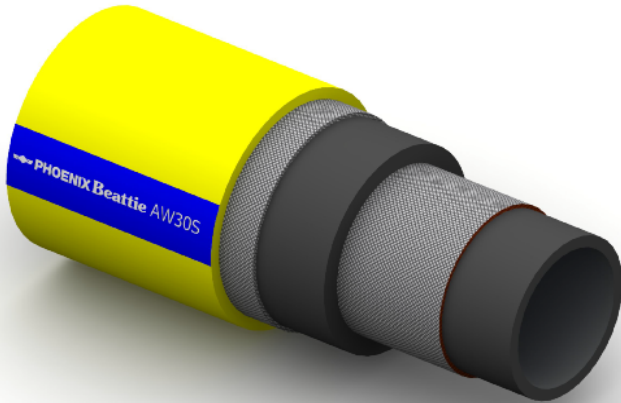


## AW30/40S Compressed Air



### Construction:

**Tube:** Black NBR; Oil Mist Resistant.

**Reinforcement:** High Tensile Steel Cords.

**Cover:** Yellow SBR; Abrasion and Ozone Resistant.

**Temperature Range:** -35°C To +85°C.

**Typical Application:** Compressed Air, designed for long lasting service and maximum safety in heavy duty applications.

**Branding:**  **PHOENIX Beattie AW40S AIR WP 40 BAR**

White Text on a Blue Stripe

 **PHOENIX Beattie AW30S AIR WP 30 BAR**

White Text on a Blue Stripe

Part No	Inside Dia		O.D.	Working Pressure		Minimum Burst Pressure		Min Bend Rad	Weight
	mm	Inch		Bar	PSI	Bar	PSI		
AW40S-024	38	1½	52	40	600	160	2400	190	1.58
AW40S-032	51	2	65	40	600	160	2400	255	2.24
AW30S-048	76	3	95	30	450	120	1800	380	4.13
AW30S-064	102	4	121	30	450	120	1800	510	5.64