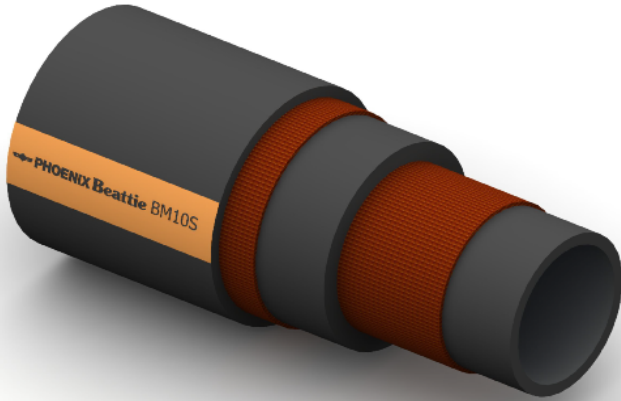


BM10S Bulk Material Delivery



Construction:

Tube: Black SBR/NR Blend. Abrasion Resistant .

Reinforcement: High Tensile Textile Cords.

Cover: Black IR/BR Blend; Abrasion and Ozone Resistant.

Temperature Range: -35°C To +85°C.

Typical Application: Bulk Material Delivery. Specially designed for heavy duty Barite and Cement delivery to offshore platforms.

Branding: **PHOENIX Beattie BM10S BULK MATERIAL DELIVERY WP 10 BAR**

Black Text on an Orange Stripe (Barite)

Black Text on a Yellow Stripe (Cement)

| Part No | Inside Dia | | O.D. | Working Pressure | | Minimum Burst Pressure | | Min Bend Rad | Weight |
|-----------|------------|------|------|------------------|-----|------------------------|-----|--------------|--------|
| | mm | Inch | | mm | Bar | PSI | Bar | | |
| BM10S-064 | 102 | 4 | 124 | 10 | 150 | 40 | 600 | 612 | 4.60 |
| BM10S-080 | 127 | 5 | 149 | 10 | 150 | 40 | 600 | 762 | 5.70 |