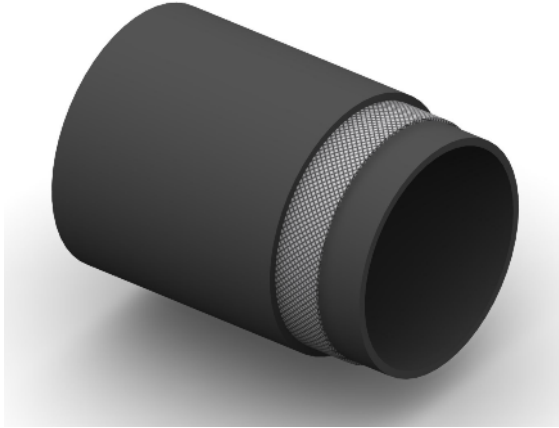


**BW7** Exceeds The Requirements Of SAE 100R1

**Construction:**

**Tube:** Nylon 11.

**Reinforcement:** Single High Tensile Steel Wire Braid.

**Cover:** Chemical Resistant Polyurethane. (Pin Pricked For Gas Applications)

**Temperature Range:** -40°C To +95°C.

**Application:** Suitable for many Industrial Gases, (eg. Helium, Air, Helox – Max 25% O<sub>2</sub>) and Hydraulic Oils.

Part No	Inside Dia		O.D.	Working Pressure		Minimum Burst Pressure		Min Bend Rad	Weight
	mm	Inch		mm	Bar	PSI	Bar		
BW7-03	5	3/16	9.3	345	5000	1380	20000	38	0.10
BW7-04	6	1/4	11.8	293	4250	1172	17000	51	0.16
BW7-05	8	5/16	13.6	276	4000	1104	16000	51	0.19
BW7-06	10	3/8	15.5	232	3375	930	13000	63	0.25
BW7-08	12	1/2	18.6	190	2750	760	11000	75	0.31
BW7-10	16	5/8	23.5	172	2500	690	10000	203	0.43
BW7-12	19	3/4	27.0	138	2000	552	8000	241	0.50
BW7-16	25	1	33.5	100	1450	400	5800	305	0.62