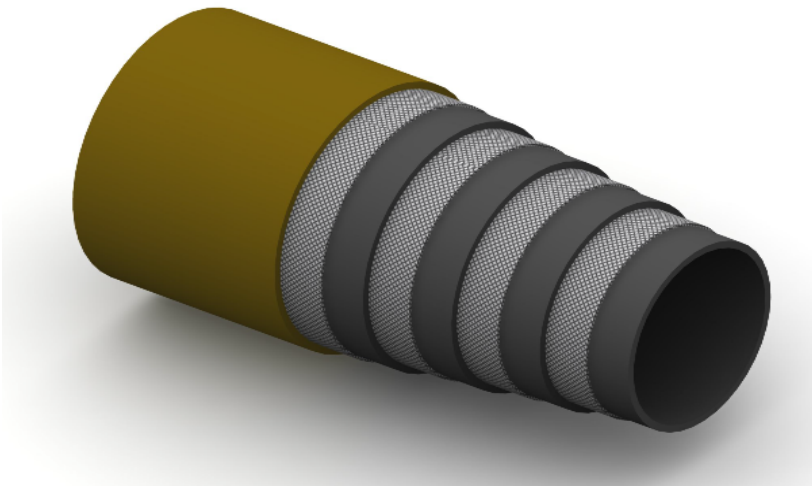


BX20



Construction:

Tube: Neoprene/Layer of Synthetic Fabric.

Reinforcement: Four Plies of High Tensile Steel Wire.

Cover: Synthetic Rubber; Weather, Oil and Abrasion Resistant.

Temperature Range: -40°C To +121°C.

| Part No | Inside Dia | | O.D. | Working Pressure | | Minimum Burst Pressure | | Min Bend Rad | Weight |
|---------|------------|-------|------|------------------|------|------------------------|-------|--------------|--------|
| | mm | Inch | | mm | Bar | PSI | Bar | | |
| BX20-12 | 19 | 3/4 | 23 | 345 | 5000 | 1380 | 20000 | 240 | 1.59 |
| BX20-16 | 25 | 1 | 39 | 345 | 5000 | 1380 | 20000 | 300 | 2.20 |
| BX20-20 | 32 | 1.1/4 | 50 | 345 | 5000 | 1380 | 20000 | 415 | 3.69 |
| BX20-24 | 38 | 1.1/2 | 57 | 345 | 5000 | 1380 | 20000 | 500 | 4.79 |
| BX20-32 | 51 | 2 | 71 | 345 | 5000 | 1380 | 20000 | 635 | 7.48 |