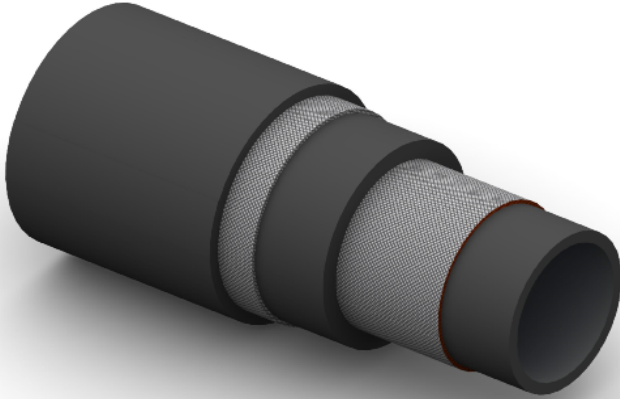


CP85S Concrete Pumping



Construction:

Tube: Black Conductive NR, Abrasion Resistant.

Reinforcement: High Tensile Steel Cords.

Cover: Black Conductive SBR/NR Blend; Abrasion and Ozone Resistant.

Temperature Range: -35°C To +85°C.

Typical Application: High Pressure Concrete placement.

| Part No | Inside Dia | | O.D. | Working Pressure | | Minimum Burst Pressure | | Min Bend Rad | Weight |
|-----------|------------|------|------|------------------|------|------------------------|------|--------------|--------|
| | mm | Inch | | mm | Bar | PSI | Bar | | |
| CP85S-032 | 51 | 2 | 68 | 85 | 1275 | 200 | 3000 | 255 | 2.43 |
| CP85S-048 | 76 | 3 | 101 | 85 | 1275 | 200 | 3000 | 380 | 5.81 |
| CP85S-064 | 102 | 4 | 129 | 85 | 1275 | 200 | 3000 | 510 | 7.73 |
| CP85S-080 | 127 | 5 | 156 | 85 | 1275 | 200 | 3000 | 635 | 11.06 |