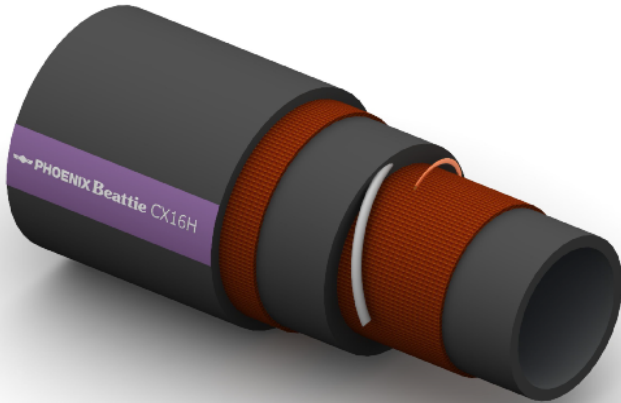


CX16H Chemical Hose



Construction:

Tube: Black Conductive EPDM Blend.

Reinforcement: Textile Braided, Copper Static Wire, Zinc Plated Steel Wire Helix.

Cover: CR, Black Conductive; Abrasion, Oil and Ozone Resistant.

Temperature Range: -30°C To +85°C.

Typical Application: Acid and Chemical suction and delivery suitable for 98% of existing Chemicals.

Branding:  **PHOENIX Beattie CX16H CHEMICAL SUCTION & DELIVERY WP 16 BAR**
White Text on a Purple Stripe.

Part No	Inside Dia		O.D.	Working Pressure		Minimum Burst Pressure		Min Bend Rad	Weight
	mm	Inch		Bar	PSI	Bar	PSI		
CX16H-016	25	1	37	16	232	64	928	260	1.00
CX16H-024	38	1½	51	16	232	64	928	400	1.60
CX16H-032	51	2	67	16	232	64	928	550	2.40
CX16H-048	76	3	91	16	232	64	928	800	3.10