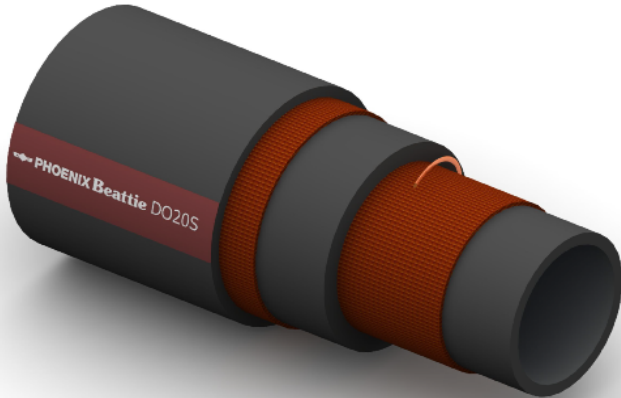


DO10S Fuel and Oil Delivery


Construction:

Tube: Black NBR .

Reinforcement: High Tensile Textile Cords Plus Antistatic Wire.

Cover: Black CR/BR Blend; Abrasion, Ozone and Hydrocarbon Resistant.

Temperature Range: -30°C To +100°C.

Typical Application: Fuel Oil Delivery, with up to 50% Aromatic Content, suitable for Seawater, Mud and general offshore applications.

Branding:  **PHOENIX Beattie DO10S OIL DELIVERY WP 10 BAR**

White Text on a Brown Stripe.

Part No	Inside Dia		O.D.	Working Pressure		Minimum Burst Pressure		Min Bend Rad	Weight
	mm	Inch		mm	Bar	PSI	Bar		
DO10S-032	51	2	67	10	150	40	600	306	1.80
DO10S-048	76	3	92	10	150	40	600	456	2.60
DO10S-064	102	4	119	10	150	40	600	612	3.60
DO10S-080	127	5	146	10	150	40	600	762	5.40
DO10S-096	152	6	172	10	150	40	600	912	6.40
DO10S-128	203	8	225	10	150	40	600	1260	10.0