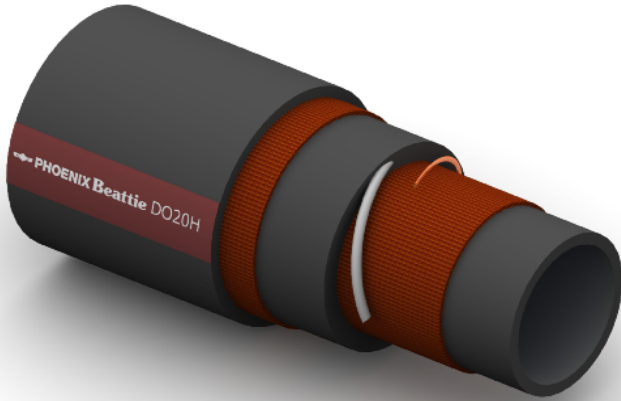


# DO20H Fuel and Oil Suction and Delivery



**Construction:**

**Tube:** Black NBR.

**Reinforcement:** High Tensile Textile Cords with Embedded Steel Helix Wire And Antistatic Wire.

**Cover:** Black CR/BR Blend; Abrasion, Ozone and Hydrocarbon Resistant.

**Temperature Range:** -30°C To +100°C.

**Typical Application:** Fuel Oil Suction and Delivery, with up to 50% Aromatic Content, suitable for Seawater, Mud and general offshore applications, long lasting in bunkering applications.

**Branding:**  **PHOENIX Beattie DO20H OIL SUCTION & DELIVERY WP 20 BAR**  
White Text on a Brown Stripe.

Part No	Inside Dia		O.D.	Working Pressure		Minimum Burst Pressure		Min Bend Rad	Weight
	mm	Inch		mm	Bar	PSI	Bar		
DO20H-032	51	2	70	20	300	80	1200	305	2.70
DO20H-048	76	3	99	20	300	80	1200	380	4.10
DO20H-064	102	4	125	20	300	80	1200	510	6.60
DO20H-080	127	5	154	20	300	80	1200	635	10.00
DO20H-096	152	6	181	20	300	80	1200	760	12.80
DO20H-128	203	8	240	20	300	80	1200	1015	18.60
DO20H-160	254	10	293	20	300	80	1200	1270	26.10
DO20H-192	300	12	347	15	225	60	900	1700	38.00