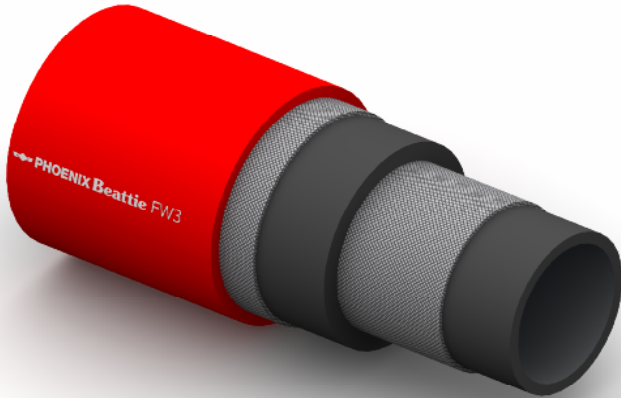


# FW3 Seawater Delivery

Fire Resistant



**Construction:**

**Tube:** Black CR Rubber.

**Reinforcement:** Steel Cord Layers.

**Cover:** Red Smooth CR.

**Temperature Range:** -30°C To +100°C.

**Typical Application:** Water Delivery.

**Fire Rating:** Lloyds Approved at 700°C for 30 Minutes

**Branding:**  **PHOENIX Beattie FW3 FIRESHIELD WP 21 BAR**  
Silver Text.

Part No	Inside Dia		O.D.	Working Pressure		Minimum Burst Pressure		Min Bend Rad	Weight
	mm	Inch		Bar	PSI	Bar	PSI		
FW3-032	51	2	79	21	305	104	1500	400	4.78
FW3-048	76	3	107	21	305	104	1500	500	7.13
FW3-064	102	4	134	21	305	104	1500	600	7.46
FW3-080	127	5	156	21	305	104	1500	1030	9.56
FW3-096	152	6	184	21	305	104	1500	1140	14.02
FW3-128	203	8	242	21	305	104	1500	1250	22.54