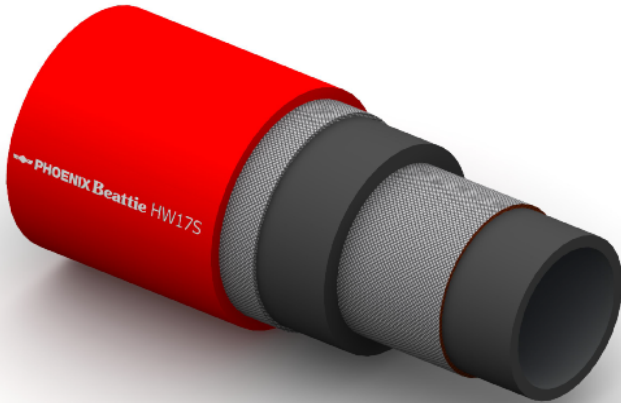


HW17S Saturated Steam



Construction:

Tube: Black EPDM.

Reinforcement: High Tensile Steel Cords.

Cover: Red EPDM; Heat, Abrasion and Ozone Resistant.

Temperature Range: -40°C To +208°C.

Typical Application: Saturated Steam.

Branding:  **PHOENIX Beattie HW17S STEAM WP 17 BAR**
White Text.

Part No	Inside Dia		O.D.	Working Pressure		Minimum Burst Pressure		Min Bend Rad	Weight
	mm	Inch		mm	Bar	PSI	Bar		
HW17S-008	13	½	25	17	255	170	2550	130	0.55
HW17S-012	19	¾	33	17	255	170	2550	190	0.83
HW17S-016	25	1	40	17	255	170	2550	250	1.02
HW17S-024	38	1½	54	17	255	170	2550	380	1.70
HW17S-032	51	2	69	17	255	170	2550	510	2.60