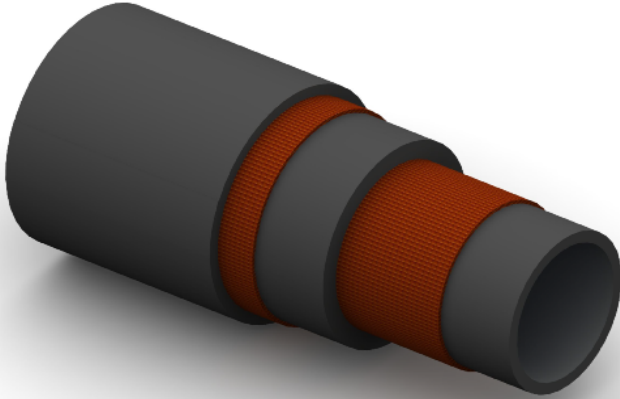


JF20S Aircraft Refuelling


Construction:

Tube: Black Nitrile Rubber, Antistatic, No Fuel Solubility.

Reinforcement: Textile Braid.

Cover: Black CR Electrically Conductive.

Temperature Range: -30°C To +70°C.

Typical Application: Suitable for all Aviation Gasolines and Jet Fuels.

Spec: EN 1361, Flame Retardant Cover TRBF 1131.

Part No	Inside Dia		O.D.	Working Pressure		Minimum Burst Pressure		Min Bend Rad	Weight
	mm	Inch		mm	Bar	PSI	Bar		
JF20S-012	19	¾	31	20	300	80	1200	100	0.60
JF20S-016	25	1	37	20	300	80	1200	150	0.80
JF20S-024	38	1½	51	20	300	80	1200	200	1.20
JF20S-032	51	2	66	20	300	80	1200	250	1.90
JF20S-040	63	2½	76	20	300	80	1200	275	2.40
JF20S-048	75	3	91	20	300	80	1200	300	2.80
JF20S-064	100	4	116	20	300	80	1200	400	3.70