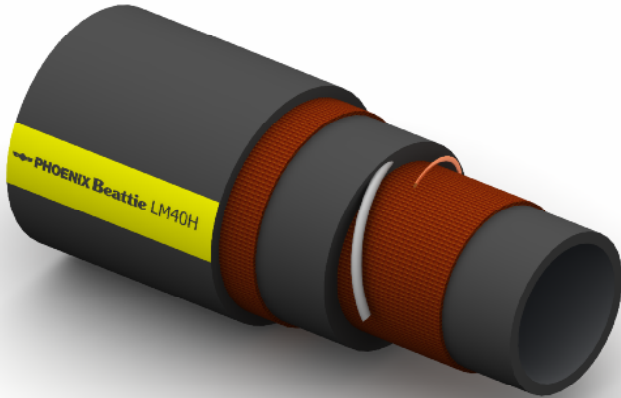


# LM40H Liquid Mud Suction and Delivery



**Construction:**

**Tube:** Black NBR.

**Reinforcement:** High Tensile Textile Cords with Embedded Steel Helix Wire And Antistatic Wire.

**Cover:** Black IR/BR Blend; Abrasion, Ozone and Hydrocarbon Resistant.

**Temperature Range:** -30°C To +100°C.

**Typical Application:** : Liquid Mud containing Crude Oil and Grit suction & delivery in offshore applications. Also suitable for Fuel Oil suction & delivery with up to 50% Aromatic Content.

**Branding:**  **PHOENIX Beattie LM40H OIL SUCTION & DELIVERY WP 40 BAR**  
Black Text on a Yellow Stripe.

Part No	Inside Dia		O.D.	Working Pressure		Minimum Burst Pressure		Min Bend Rad	Weight
	mm	Inch		Bar	PSI	Bar	PSI		
LM40H-048	76	3	102	40	600	160	2400	456	5.54
LM40H-064	102	4	129	40	600	160	2400	612	7.46
LM40H-080	127	5	169	40	600	160	2400	762	13.80