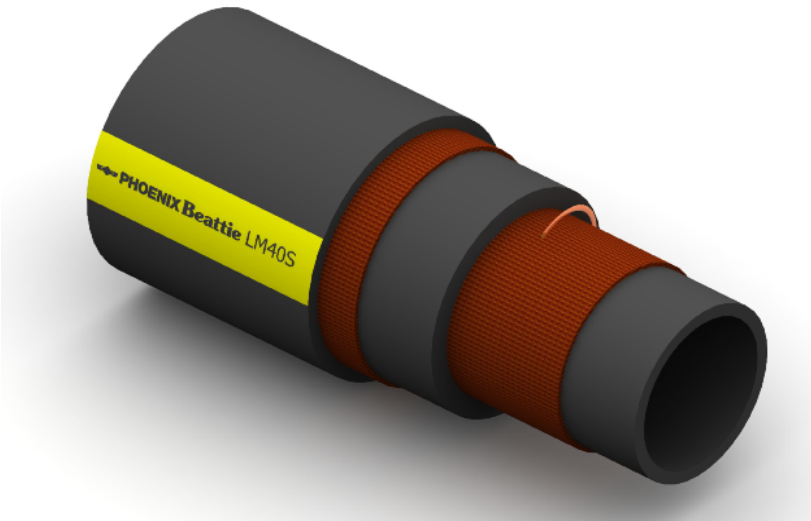


# LM40S Liquid Mud Delivery



**Construction:**

**Tube:** Black NBR.

**Reinforcement:** High Tensile Textile Cords, Plus Antistatic Wire.

**Cover:** Black IR/BR Blend; Abrasion, Ozone and Hydrocarbon Resistant.

**Temperature Range:** -30°C To +100°C.

**Typical Application:** Liquid Mud containing Crude Oil and Grit delivery in offshore applications. Also suitable for Fuel delivery with up to 50% Aromatic Content

**Branding:** **PHOENIX Beattie LM40S OIL DELIVERY WP 40 BAR**  
Black Text on a Yellow Stripe.

Part No	Inside Dia		O.D.	Working Pressure		Minimum Burst Pressure		Min Bend Rad	Weight
	mm	Inch		mm	Bar	PSI	Bar		
LM40S-048	76	3	103	40	600	160	2400	456	4.30
LM40S-064	102	4	128	40	600	160	2400	612	5.60