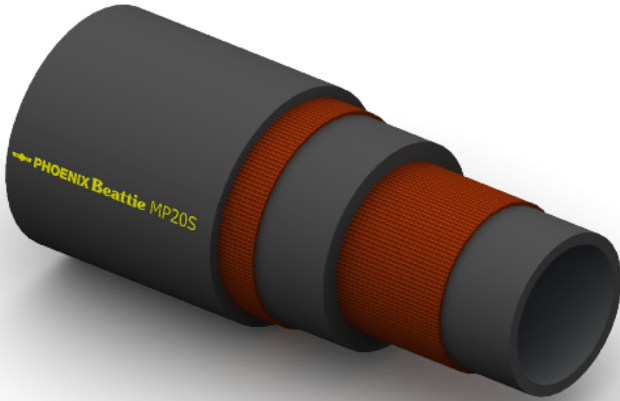


MP20S Multipurpose


Construction:

Tube: Black EPDM.

Reinforcement: High Tensile Textile Cords.

Cover: Black EPDM; Abrasion and Ozone Resistant.

Temperature Range: -40°C To +100°C.

Typical Application: Water, Seawater, Hot Water & Steam.

Branding:  **PHOENIX Beattie MP20S MULTIPURPOSE DELIVERY WP 20 BAR**
Yellow Text on a Transparent Stripe.

Part No	Inside Dia		O.D.	Working Pressure		Minimum Burst Pressure		Min Bend Rad	Weight
	mm	Inch		mm	Bar	PSI	Bar		
MP20S-006	10	3/8	17	20	300	60	900	60	0.23
MP20S-008	13	1/2	21	20	300	60	900	78	0.39
MP20S-012	19	3/4	28	20	300	60	900	114	0.64
MP20S-016	25	1	35	20	300	60	900	150	0.80
MP20S-024	38	1.1/2	52	20	300	60	900	228	1.11
MP20S-032	51	2	70	20	300	60	900	306	2.09