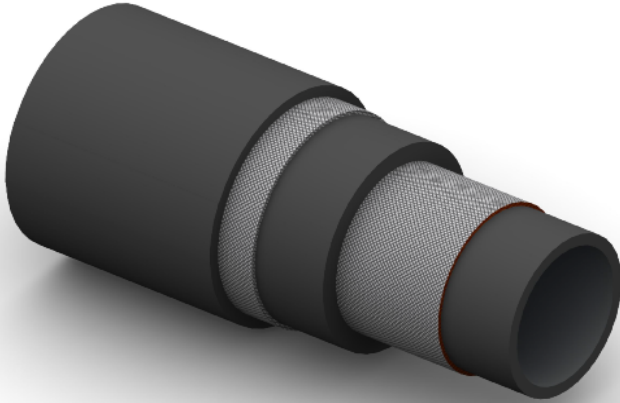


Slim Line Rotary



Construction:

Tube: Black NBR/CR Blend.

Reinforcement: High Strength Steel Cables And Textile Plies.

Cover: Black CR, Weather; Oil, Fuel, Ozone and Abrasion Resistant.

Temperature Range: -30°C To +82°C.

Part No	Inside Dia		O.D.	Working Pressure		Minimum Burst Pressure		Min Bend Rad	Weight
	mm	Inch		mm	Bar	PSI	Bar		
SLR-40	63	2.1/2	106	207	3000	620	9000	760	11.2
SLR-48	76	3	119	207	3000	620	9000	910	13.0