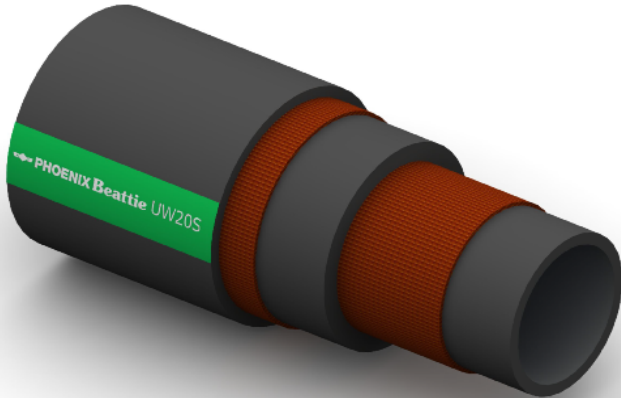


UW20S Water


Construction:

Tube: Black NBR.

Reinforcement: High Tensile Textile Cords.

Cover: Black NBR; Abrasion and Ozone Resistant.

Temperature Range: -35°C To +85°C.

Typical Application: Water Transfer, designed for heavy duty applications.

Branding:  **PHOENIX Beattie UW20S WATER DELIVERY WP 20 BAR**
White Text on a Green Stripe.

Part No	Inside Dia		O.D.	Working Pressure		Minimum Burst Pressure		Min Bend Rad	Weight
	mm	Inch		mm	Bar	PSI	Bar		
UW20S-006	10	3/8	19	20	300	60	900	60	0.23
UW20S-008	13	1/2	23	20	300	60	900	78	0.39
UW20S-012	19	3/4	30	20	300	60	900	114	0.64
UW20S-016	25	1	37	20	300	60	900	150	0.80
UW20S-032	51	2	67	20	300	60	900	306	2.09